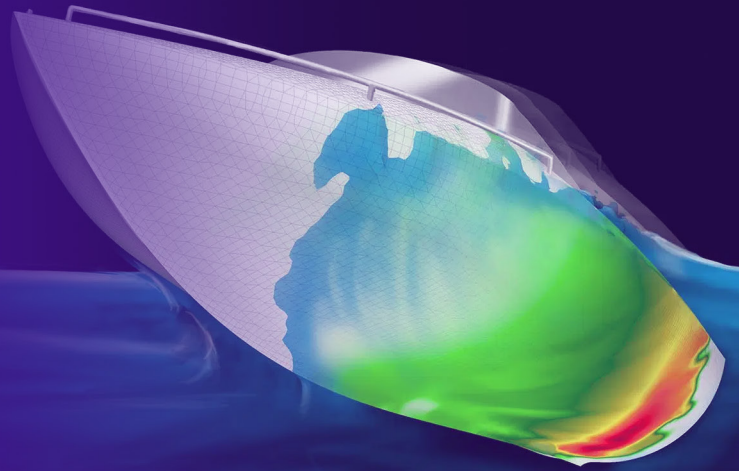


# Reducing Risk, Saving Time: How Maya HTT Protects Atlassian Cloud Data



## Maya HTT

### Company

[Maya HTT](#) is a global pioneering engineering software development company and service provider specializing in simulation, AI, and digital twin technologies. Maya HTT operates in North America, United Kingdom and France and delivers cutting-edge solutions that improve design, productivity, and efficiency across aerospace, automotive, electronics, and other complex industries.

### Solution

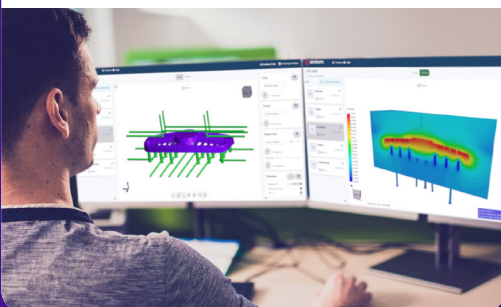
[HYCU R-Cloud](#)

### Industry

Engineering Software / Professional Services

### Region

North America, UK, France



”

With HYCU, we have peace of mind. It just works. That’s exactly what you want from backup.

**Jonathan Bieber**

Director of IT and CISO, Maya HTT

## Challenge

As Maya HTT transitioned from Atlassian Data Center to the cloud, protecting critical documentation and collaboration data became a top priority. The company’s internal Jira Software Data Center, Jira Service Management Data Center, and Confluence Data Center stored vital engineering knowledge, customer collaboration records, and project data.

“Once that data is gone, it’s gone,” said Jonathan Bieber, Maya HTT’s Director of IT and CISO. “We needed to ensure we could recover everything, whether it’s for legal, operational, or business continuity reasons.”

After reviewing other vendors, the Maya HTT IT team found that many solutions lacked responsiveness or required too much overhead to manage. “We weren’t looking for a vendor who saw us as just another small account. We needed a partner who’d have our back,” said Jonathan Bieber.

”

We didn't have time to spend a year evaluating data protection tools. HYCU made the decision easy.

You don't want to spend time worrying about backups. With HYCU, we don't.

”

Support wasn't an afterthought. It felt like we were working with people who truly cared.

**Jonathan Bieber**

Director of IT and CISO,  
Maya HTT

## About HYCU

HYCU is the fastest-growing leader in the multi-cloud and SaaS data protection as a service industry. By bringing true SaaS-based data backup and recovery to on-premises, cloud-native, and SaaS IT environments, the company provides unrivaled data protection, migration, disaster recovery, and ransomware protection to thousands of companies worldwide.

The company's award-winning **R-Cloud™ platform** eliminates complexity, risk, and the high cost of legacy-based solutions, providing data protection simplicity to make it the #1 SaaS Data Protection platform. With an industry leading NPS score of 91, HYCU has raised \$140M in VC funding to date and is based in Boston, Mass.

Learn more at [www.hycu.com](http://www.hycu.com).

## The HYCU Solution

Jonathan Bieber discovered HYCU during his research for a backup solution for Jira and Confluence. After a hands-on trial, the decision was clear.

“HYCU stood out for its clarity, simplicity, and team support,” said Jonathan Bieber. “The platform checked every box, and the team behind it gave us the confidence we needed to move forward.”

Maya HTT deployed HYCU R-Cloud to protect its Atlassian Cloud instances, including Jira and Confluence. With automated, policy-driven backups, Maya HTT could retain critical documentation, recover deleted data, and stay compliant without relying solely on Atlassian's native solutions that had granular recovery limitations.

## Conclusion

Since implementing HYCU R-Cloud, Maya HTT has:

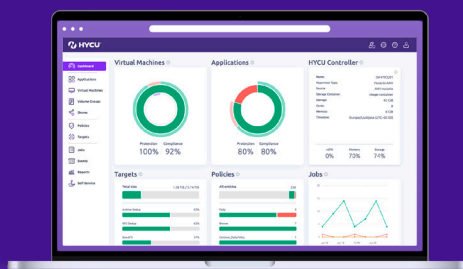
- Eliminated blind spots by ensuring continuous backup of Atlassian Cloud data.
- Accelerated recovery with one-click restores of projects, issues, attachments, and more.
- Streamlined operations by freeing up IT time for more strategic work.
- Strengthened support with responsive, knowledgeable assistance from HYCU customer success and support team members.

Even during moments of implementation, when API-related issues emerged, HYCU support worked directly with Maya HTT to resolve problems fast. “It felt like a true collaboration,” Jonathan Bieber noted. “Our input was heard, and any fixes were rolled out quickly.”

## What's Next

As Maya HTT expands its cloud footprint, additional use cases for HYCU R-Cloud are already on the radar, including protection for GitHub, Azure resources, and Salesforce. The team is also interested in protecting their cloud security configurations.

While AI workloads remain on-prem due to regulatory requirements, Maya HTT sees HYCU as a critical partner for wherever their data lives next.



Get Started  
with HYCU!