

Complete Data Protection for Nutanix with HYCU and Dell



Your Nutanix Environment Deserves Purpose-Built Data Protection



The Challenge with Protecting Nutanix

Customers choose Nutanix for its efficient, scalable HCI experience. Yet most data protection vendors are still built for VMware first, forcing you to adopt solutions that:

- Rely on retrofitted, legacy VMware designs—bogging down your Nutanix environment with agents and proxy servers
- Demand hundreds of hours in deployment, maintenance, and management
- Limit coverage to only VMs, overlooking critical files, object storage, volume groups, and databases

Why HYCU & Dell?

HYCU, the leading purpose-built data protection solution for Nutanix, has joined forces with Dell to offer an enterprise-class, resilient, and low-touch solution designed to protect all workloads without the drama of agents and the headaches that come with legacy backup solutions.

Together, HYCU and Dell offer:

- ✓ Native, application-centric protection for Nutanix with zero agents & zero proxy servers.
- ✓ Fastest recovery in the industry, from any disruption
- ✓ Broadest coverage of your Nutanix estate, so no workload goes unprotected.

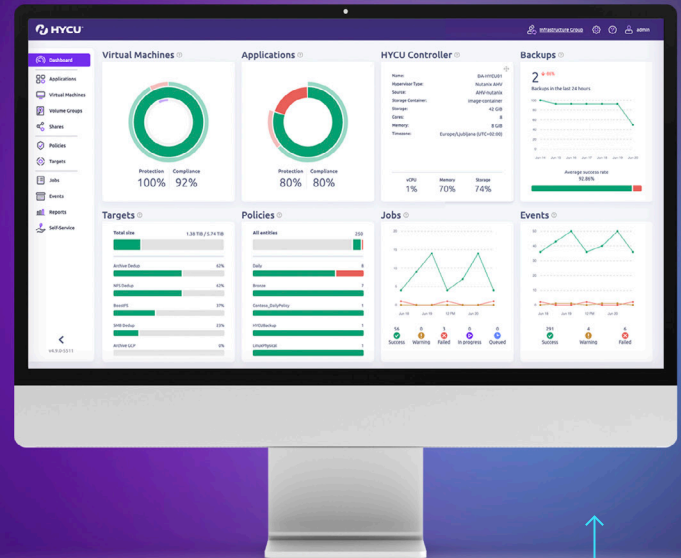
About HYCU



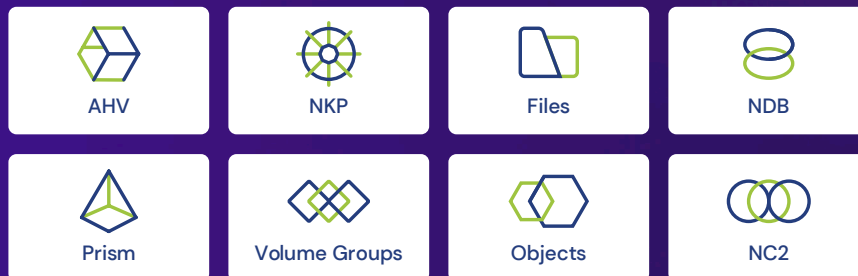
Integrated with Dell
PowerProtect DD

The leader in Nutanix Data Protection

Agentless, native data protection
for all your Nutanix workloads



A Commitment to Innovation with Nutanix



Deepest Integration

- Nutanix Mine & Calm Integration
- Hybrid, Multi-Cloud Ready
- Container-Friendly

Ready for Now & the Future

- Cloud Workloads
- ML/AI Workloads
- SaaS Applications

1st Purpose-Built Solution for
Nutanix AHV

1st to Support
Nutanix Files

1st to Support
Nutanix NDB

1st to Support
Nutanix Objects

1st to Support
Volume Groups

Complete Data Protection For Your Nutanix Estate

Protect all Nutanix data – Not just VM's

- **VMs:** Protect both AHV and ESXi workloads with zero performance impact.
- **Files & Objects:** Fast, scale-out backup and recovery for Nutanix Files and Objects.
- **Databases:** Unique native NDB support plus all third-party databases – no agents needed.
- **Cloud Workloads:** Safeguard Nutanix NC2 on AWS and Azure without costly compute Resources.
- **Containers:** End-to-end protection for containerized apps on Nutanix Kubernetes Platform (NKP).

Intelligently Simple Backup and Disaster Recovery

- **One-Click Backups:** Automatically scheduled within simple, intelligent policies to meet SLAs, eliminating hands-on management.
- **Fully Optimized:** Rapid recovery times and efficient storage through automated performance tuning.
- **Auto-Protect:** Workloads are automatically secured based on Nutanix categories offering protection at the pace of innovation.
- **Seamless DR:** Ensure application-consistent disaster recovery across on-premises, cloud, or hybrid environments without the complexity or high cost.

Cyber Resilience with Dell

- **Secure by Design:** Backups stored as tamper-proof, immutable copies on Dell PowerProtect DD with retention lock (governance and compliance modes)
- **Fastest Recovery:** HYCU triggers isolated snapshots for lightning-fast ransomware recovery.
- **Trust But Verify:** Automated validation ensures backups are functional, giving confidence in reliable recovery with no manual effort.
- **Detect Anomalies:** Proactively spot risks and issues across your entire Nutanix data protection environment.

Hybrid Cloud Ready

- **NC2-Ready:** R-Cloud integrates seamlessly with Nutanix Cloud Clusters (NC2), eliminating the need for extra compute instances.
- **Dell PowerProtect DD Anywhere:** Deploy Dell PowerProtect DD on physical appliances or Dell PowerProtect DD Virtual Edition on hypervisors and public clouds.
- **Low TCO:** Reduced storage requirements and no additional compute leads to a significantly lower total cost of ownership.

Complete Freedom of Choice

- **Migrate Safely to Nutanix:** HYCU R-Cloud frees you from vendor lock-in by supporting cross-hypervisor recovery—putting you in control of your own data.
- **Move To, From & Between Clouds:** Leverage public cloud in its native form and NC2 Clusters. With SpinUp, HYCU R-Cloud automatically migrates workloads without extra compute overhead.

Compliance and Security

- **Full Isolated Segmentation:** Create secure, separate environments for different data types, applications, and workloads.
- **Advanced Security Controls:** Combine HYCU's MFA and RBAC with Dell PowerProtect DD's dual authorization and clock tamper safeguards for robust data protection.
- **Government Approved:** Complies with ISO27001, DISA STIG, FIPS 140-2, and NIAP Common Criteria for industry-recognized security standards.
- **Proactive Monitoring:** Real-time alerts (via webhooks) and visibility ensure rapid threat response and centralized control.

What's Different about HYCU



Unique to HYCU

- **Protecting Nutanix Database Service (NDB):** Native enterprise level data protection for Nutanix Database Service (NDB) without any manual workarounds and seamlessly working with existing Nutanix technology such as Time Machine – Only HYCU can do this!
- **Protecting Volume Groups:** Protect critical applications and databases relying on Nutanix Volume Groups with HYCU's unique, agentless protection.
- **vTPM:** Protect confidential and sensitive workloads that use a virtual trusted platform module (vTPM), again only HYCU can do this.
- **DISA STIG:** HYCU is the only Data Protection vendor to have a DISA STIG (secure deployment standard). And is highly used across federal and military use cases.

Automated Agentless Application Discovery

- **Auto-discovery:** Application discovery and protection is automated and agentless, simplifying management and eliminating manual intervention.
- **Application-aware, agentless backups** provide comprehensive protection, maintaining data integrity and availability with minimal overhead.

Lightweight and Efficient

- **Deploy in Minutes:** HYCU is a single VM, deployed in minutes with a light, non-intrusive footprint.
- **Zero Agents:** Agentless architecture eliminates additional software installations, simplifying deployment and reducing overhead.
- **Store More for Less:** By leveraging Dell PowerProtect DD's deduplication and compression, HYCU minimizes storage requirements, reducing costs and maximizing IT investment value.
- **Instant Protection:** Easy workflows and zero learning curve boost productivity and minimize complexity.

Fastest Recovery Possible

- **Rapid RTO:** Leveraging underlying Nutanix storage snapshots, HYCU delivers the fastest possible recovery (including from ransomware).
- **Zero Impact:** No performance overhead during backup or restore.
- **Invisible to Attackers:** The snapshot is hidden from Nutanix and potential threats, ensuring it cannot be deleted outside of HYCU.

RTO Assurance

- **Meet your SLAs:** With HYCU both RPO and RTO are automatically reported back and flagged when either are not meeting the desired SLA.
- **Deep Analysis:** HYCU R-Cloud analyses metrics across the entire data estate analyzing key metrics to give an accurate estimation of RTO and therefore not being reliant of inaccurate backup tests.
- **Hands Off Management:** By pro-actively monitoring RPO & RTO, HYCU can automatically place backups onto correct storage tiers to ensure compliance but also to minimize manual performance and capacity management tasks.

Broadest and Deepest Coverage

HYCU R-Cloud delivers the broadest and most comprehensive data protection coverage for Nutanix workloads, ensuring every aspect of your environment is safeguarded.

From virtual machines, applications, and databases to file shares and Kubernetes clusters, HYCU supports the full spectrum of workloads running on Nutanix. Its deep integration with Nutanix-native technologies ensures seamless backup and recovery, enabling efficient and reliable protection for critical workloads. HYCU also supports hybrid and multi-cloud environments, providing unparalleled flexibility and data mobility.

Nutanix Native, Dell Integrated

How HYCU and Dell provide the most efficient and complete data protection solution for Nutanix workloads.

How it works. HYCU integrates seamlessly with Dell platforms such as Dell PowerProtect DD, Dell ECS, Dell PowerScale, and countless Dell server infrastructure, enabling efficient data protection, scalable backups, and secure recovery solutions. This integration optimizes storage performance across diverse environments, ensuring reliable and cost-effective data management.

HYCU Integration with DDBoost

HYCU integrates deeply with Dell PowerProtect DD storage using DD Boost to make backups faster and more efficient. DD Boost allows some of the data deduplication work to happen on the HYCU side before data is sent to the Dell PowerProtect DD appliance. This means less data travels over the network, speeding up backups and reducing network congestion.

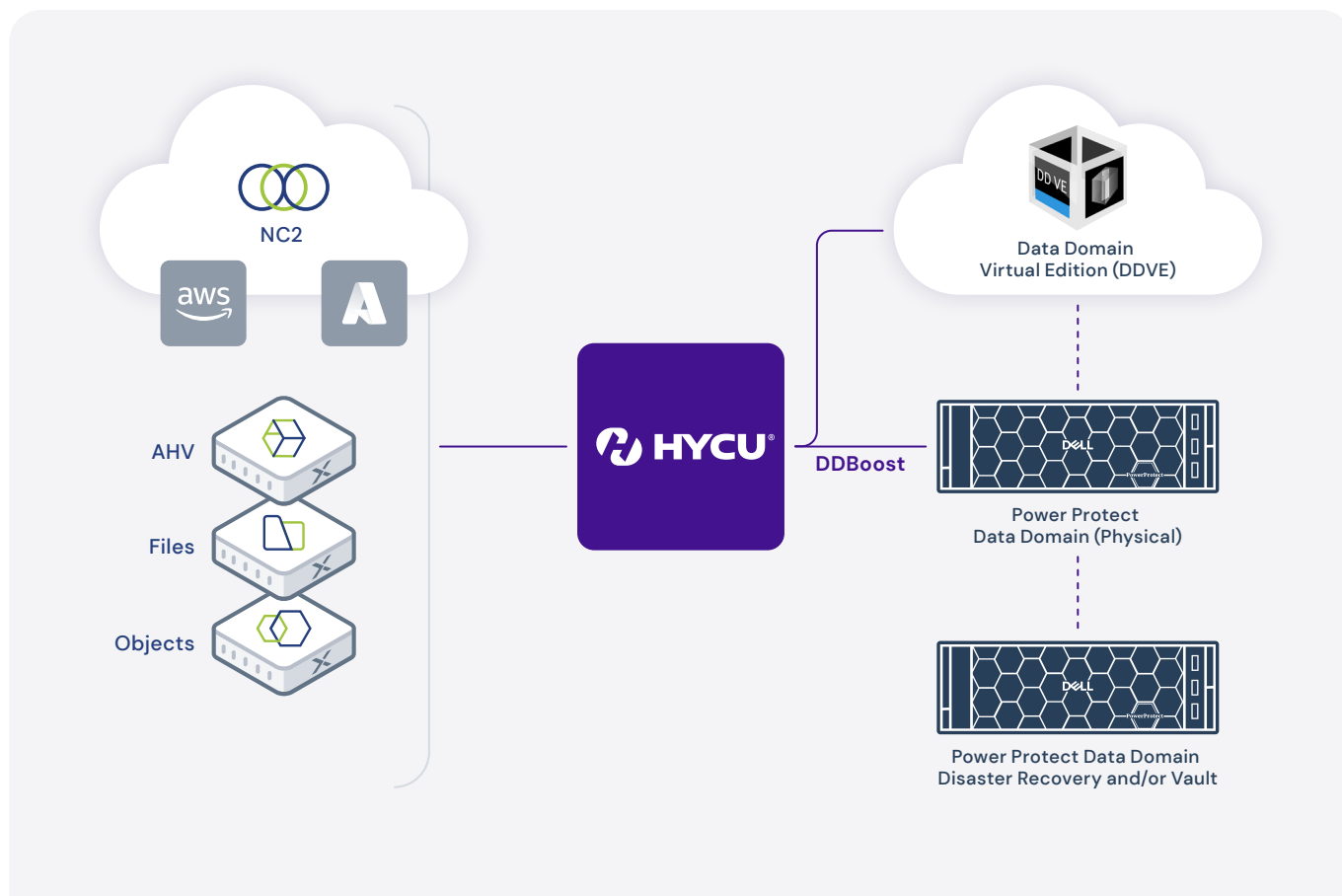
HYCU Integration with PowerProtect DD Retention Lock

HYCU also uses Dell PowerProtect DD's Retention Lock feature. This is a way to make sure backups can't be deleted or changed for a set period, which is important for meeting legal or business rules about keeping data. There are two modes: one that's very strict (Compliance mode) and one that allows some flexibility for authorized users (Governance mode).

The below diagram shows how HYCU & Dell combine to protect the entire Nutanix ecosystem and protect these backups from cyber threats.



HYCU integration with DDBoost with Client Direct allows for hyper efficient backups. HYCU takes advantage of the data reduction capabilities in Dell PowerProtect DD to ensure customers store the least amount of data whilst still maintaining compliance. Utilizing both Dell PowerProtect DD physical appliances and Dell PowerProtect DD Virtual edition both on-premises and in the public cloud, customer has a choice on how and where they want to store their data. HYCU R-Cloud also supports native Dell PowerProtect DD replication which includes isolation into their Cyber Vault offering providing a fully air gapped and isolated copy of the data.



HYCU + Dell: The #1 Choice for Nutanix Data Protection

